

MUNICIPAL NEWSLETTER

FEBRUARY 2024

MUNICIPALITY HOSTS LOCAL AND INTERNATIONAL DELEGATIONS



Mossel Bay Municipality has been privileged to serve as a case study for visiting local and international municipal and other delegations the past two months. Not only did the municipality host **Oudtshoorn Municipality (group photograph above)** during a study visit at the end of January, but also received the Keetmanshoop Municipality from Namibia regarding the establishment of a twinning agreement between the two local government organisations early in February. Hot on the heels of this engagement, followed a fact-finding visit from a delegation representing Tacoma Sister Cities from the United States of America on their visit to several municipalities on the Garden Route. The municipality also hosted the Western Cape Municipal Manager's Forum in this month.

Previously, the municipality welcomed the Modimolle-Mookgophong, and Prince Albert Municipality for study tours. Kouga Municipality will also visit Mossel Bay on a study visit in March.

Municipalities visiting Mossel Bay have a common goal - looking to improve good governance.

The Oudtshoorn Municipality's executive management during their study visit attended the Mossel Bay Municipality's weekly service monitoring meeting and a visit was paid to the Joint Operation Centre.

These meetings were established in 2007 in order to establish and maintain service delivery standards. The service monitoring meeting is attended by mayoral committee members, the municipal manager, directors, and other senior management members of the Mossel Bay Municipality, as well as other officials. Service delivery issues are discussed, suggestions are made and solutions are implemented, on which feedback must be given at the next meeting. The meeting takes place weekly on Fridays.

Exploratory talks were held between the Mossel Bay Municipality and Keetmanshoop Municipality regarding the importance of fostering a comprehensive partnership to address the diverse needs of their communities.

The proposed memorandum of understanding aims to establish a framework for collaboration in multiple areas for the overall development and well-being of the residents. Mossel Bay has a twinning agreement in place with the City of Denpasar, Indonesia which was established in 2019.

The areas of cooperation discussed in terms of the proposed memorandum of understanding includes local economic development, electricity, information technology, community services, human resources and technical infrastructure.

The **Namibian delegation (group photograph below)** was shown around top-notch municipal infrastructure and projects including the desalination plant, and other water treatment works, as well as the Joint Operation Centre and the Thusong Service Centre. Presentations made to the delegation covered aspects including spatial planning and private sector developments, tourism and the ever-important local economic development was shown in practice during a walk about of the municipality's business parks for entrepreneurs and small businesses at Kwano in KwaNonaqaba and D'Almeida.



"We are thrilled to be here. I am a first time visitor, but have read a lot about your town and the way it is governed. Thank you for being a beacon for local government authorities in South Africa others can learn from," said Mayor of Keetmanshoop, His Worship MacDonald William Hanse.

The visit from a delegation representing Tacoma Sister Cities marked a significant step in the partnership between the Garden Route District Municipality, local municipalities, and other entities. Tacoma Sister Cities has a 28-year long relationship with George Municipality and following the significant insight gained into the local culture, challenges and potential for growth in the local community, their aim is to extend the existing collaboration to the entire Garden Route District.

The partnership between Tacoma and the Garden Route district seeks to support a wide range of cultural, educational, professional, and civic exchanges to improve trade and commercial activities.

It encourages collaborative learning, working, and problem-solving, while also nurturing community bonds through cultural appreciation and joint endeavours.

In Mossel Bay, during the discussions held in the council chambers, presentations were done by the Transnet National Ports Authority, whilst the Mossel Bay Municipality's Directorate of Community Services shared insights on their youth and other social regeneration programmes. The Directorate of Planning and Economic Development presented more information regarding economic opportunities in Mossel Bay.



"I am thrilled with this prospect of establishing a Sister City relationship with the Garden Route District Municipality, as the Garden Route is globally recognised as a 'place of opportunity'. I believe when opportunity and destiny converge, something extraordinary is bound to happen," commented Melannie Denise Cunningham, Chairperson of the **Tacoma-George Sister City Committee** (group photograph above).

Tacoma and Mossel Bay both sports a harbour, which Cunningham said was one of their primary interests in visiting Mossel Bay. The delegation also did a tour of the harbour as part of their visit to Mossel Bay.

According to Harbour Master Vania Cloete, who did a presentation on behalf of Mossel Bay Port Manager Dr Dineo Mazibuko, the previous cruise season saw 14 cruise liners moor in Mossel Bay, making a significant contribution to the R1.2 billion cruise tourism revenue generated by the Western Cape economy.

SEMIGRATION – MORE THAN A BUZZ WORD



According to an article in *Die Burger* in January 2024, 6406 households relocated to the Western Cape in 2023.

Mossel Bay was highlighted as the first choice for residents migrating between towns in South Africa, growing by an average of 368 households last year, placing Mossel Bay among the top 10 destinations in the Western Cape to relocate to.

This phenomenon is known as semigration.

Semigration can be attributed to Western Cape becoming a bastion of economic success and stability. South Africans semigrate to follow jobs, to find safe neighbourhoods and stable, safe environments for their businesses.

Mossel Bay is proud to welcome new residents to a financially viable and administratively sound local government district. The mayoral committee and executive management of the Mossel Bay Municipality, as part of preserving sustainable service delivery as well as taking a critical look at emerging trends like semigration, discussed the town's readiness at their strategic session held on 15-16 February.

Among the topics were spatial planning and water infrastructure.

DOES THE COUNCIL'S POLICY ON SPATIAL PLANNING ADDRESS THE SEMIGRATION SCENARIO?

- The Spatial Development Framework, (SDF) adopted by Council, May 2022 at that point in time, considered the total population of Mossel Bay to be 139 815 with the number of households estimated at 42 893. The figures released by Statistics SA for 2022 is 140 075.
- The growth rate adopted in the SDF on which the planning is based is 5% per year, which proves that semigration has been considered as part of the planning scenario building.
- The Council's GROW strategy is also part of the adopted SDF, which is annually reviewed with the Integrated Development Plan and budget.
- The Directorate of Infrastructure Services Department uses the SDF and the precinct plans resulting from it to guide their compilation of master plans. An example of this, is the Roads Master Plan which was concluded in 2023.

Irrespective of the growth rate, the municipality's SDF provides for various scenarios that gives sufficient guidance for infrastructure planning. The SDF has a 30-year time span at a growth rate of 5%.

As far as residential opportunities go, there are currently 532 approved residential opportunities, which excludes so-called granny flats approved and 676 occupancies for residential developments issued in 2023.

The important question remains – **what will Mossel Bay look like in future?**

More high-density buildings and developments, busier streets, more malls, increased traffic is what could be experienced in the future. It will not be an average sized coastal town anymore, but possibly a large town or even a city in 30 years' time.

IS THE WATER INFRASTRUCTURE ROLL-OUT SUFFICIENT?

As mentioned, the SDF guides the planning of infrastructure services. The following graphics address water supply in the municipal area.

WATER TREATMENT PLANTS	
Total volume of licensed raw water available per Annum	29491 ML/ Annum Quota
Total average volume of licensed raw water available per day	80.70 ML/day
Total average volume of plant design capacity per day	57.30 ML/day
Total average volume of plant treated water per day	28.26 ML/day

DAM REOURCES - MOSSEL BAY MUNICIPALITY				
DAM NAME	DAM CAPACITY m3 or KI	MUNICIPAL ALLOCATION m3 OR KI	REGISTRATION NUMBER	OWNER
Wolwedans	24 630 000	5 800 000	22 062 544	Department of Water and Sanitation
Klipheuwel	4 450 000	6 370 444	22 062 571	Department of Water and Sanitation
Ernest Robertson	410 000	1 526 304	22 062 599	Mossel Bay Municipality

TREATMENT WORKS MOSSEL BAY 2022-2023				
NAME	CAPACITY PER DAY	TOTAL CAPACITY PER DAY	AVE. VOLUME TREATED PER DAY	MAX VOLUME TREATED PER DAY
Kleinbrak WTW	3 Modules of 15MI	45MI	18.9MI	22.13MI
Sandhoogte WTW	5.0MI	5.0MI	2.61MI	3.20MI
Great Brak WTW	5.5MI	5.5MI	2.26MI	2.93MI
Desalination Plant	3 Modules of 5MI	15MI	0.0MI	0.0MI
TOTAL		70.5MI	24.80MI	28.26MI

RESERVOIRS	
Total number of reservoirs	55
Total Capacity (full supply level)	109.45 ML
Actual Capacity (Ave. 83.3% full)	92.55 ML
NEW RESERVOIRS	
Herbertsdale – 2021/22 Bo reservoir New	0.76 ML
Hartenbos – 2021/22 Vaale Valley	7.0 ML
Great Brak – 2025/26	4.0 ML
Bartelsfontein – 2025/26	7.0 ML

WASTEWATER TREATMENT PLANTS	
Total Design Capacity	22.54 ML/day
Total average daily inflow	12.40 ML/day
UPGRADING OF PLANTS	
Hartenbos WWTW – 2020/22 Upgrade inletworks	17.8 ML
Great Brak WWTW – 2022-2024	1.0ML to 4.0ML
Pinnacle Point WWTW -2022-2025	3.7ML to 8.0ML
Friemersheim WWTW	

UPGRADING OF THE PINNACLE POINT WASTEWATER TREATMENT WORKS

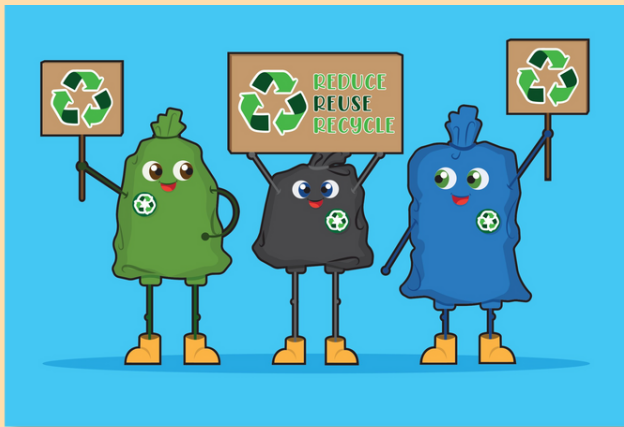
DESIGN CRITERIA

- Design flow rate to increase from 2.15 ML/day to 6.9ML/day
- Biological loading 2745 kg/day

PROPOSED UPGRADE

- New inlet works
- New flow distribution structure between the old and new plants
- New secondary treatment chain
 - New biological reactor
 - Secondary settling tank
- New mechanical dewatering facility
- Rehabilitation of the existing access road
- Extension of boundary fencing

REFUSE BAG DISTRIBUTION NOT UNLIMITED



The Mossel Bay Municipality provides 39 free garbage bags to households quarterly. These bags are distributed door to door. The first distribution for 2024 started on 1 February. Further quarterly distribution takes place in May, August and November. Free refuse bags are however not available to businesses. At housing complexes or flats, bags are given to management or the caretakers to be issued to the occupants.

It has come to the municipality's attention that residents are visiting the municipal yard in Schoeman Street, requesting additional bags over and above their quarterly quota. This is not permitted as it places tremendous strain on resources and budgets.

Members of the public are reminded that bags will only be issued from the waste management offices in the following cases - new residents arriving in Mossel Bay after the quarterly distribution has been done; or if by chance, residents have been passed over with the quarterly distribution.

Should residents be new in Mossel Bay or have been passed over during refuse bag distribution, kindly contact Sanele Mbayisa (044 606-5143 or smbayisa@mosselbay.gov.za) or visit the offices of the waste management department, Plaza Aquada, 97 Marsh Street, Floor 6 - room 102.

HELP US RECYCLE

Mossel Bay Municipality encourages residents to contribute to the municipality's efforts to recycle by using the three-bag system, which calls on residents to assist in the segregation of refuse.

Free refuse bags are allocated as follows:

Green bags = garden waste only (13)

Blue bags = all recyclable garbage (13)

Black bags = all non-recyclable household waste (13)

Additional blue bags may be requested from the waste management department, in an effort to encourage residents to aid in the municipality's recycling efforts. However, residents requiring more black (non-recyclable household waste) or green (garden waste) refuse bags are encouraged to purchase them at Mikeva or Agriland SSK.

In the last 3 months of 2023 the municipality's recycling percentage grew with almost 10%.

	OCT 2023	NOV 2023	DEC 2023
Recycling percentage	23%	27%	32,15%

HAZARDOUS HOUSEHOLD WASTE

Members of the public are reminded not to place any hazardous household waste, such as syringes, in any of the above bags. This can be done at the open days for the disposal of hazardous household waste offered by the municipality. This is a free service offered to the public and the list of items accepted includes e-waste; motor oil, oil filters, brake fluid and used antifreeze; paint, paint thinner and turpentine; pesticides or herbicides; household batteries; CRTs, old television sets and miscellaneous electronics; tyres; and fluorescent tubes and globes. The following will not be accepted: explosives; ammunition; radioactive materials; and controlled substances.

This year, this service is being extended to include a third venue, which will alternately be the Kwanongqaba and Asla community halls. The drop off time is from 08:30 to 14:00.

Dates are as follows:

March 2024:

- 26 March – Kwanongqaba community hall
- 27 March – Mossel Bay town hall
- 28 March – Great Brak rivier municipal offices

June 2024:

- 26 June – Asla Park community hall
- 27 June – Mossel Bay town hall
- 28 June – Great Brak River municipal offices

September 2024:

- 25 September – Kwanongqaba community hall
- 26 September – Mossel Bay town hall
- 27 September – Great Brak River municipal offices

December 2024:

- 4 December – Asla community hall
- 5 December – Mossel Bay town hall
- 6 December – Great Brak River municipal offices

REPORT ILLEGAL DUMPING

Shops that have expired food items that must be disposed of are urged to contact the waste management department at 044 606 5151 for more information on the correct waste disposal process.

The municipality urges the community to report illegal dumping in order for the necessary action to be taken, before an environmental hazard is created. Illegal dumping can be reported at 044 606 5143 / 5281 or the general switchboard and after-hours call centre - 044 606 5000. Photographs are very helpful in tracing perpetrators and bringing them to book. Photographs can be emailed to admin@mosselbay.gov.za. Perpetrators will be fined up to R1000.



KNOW YOUR VOTING STATIONS

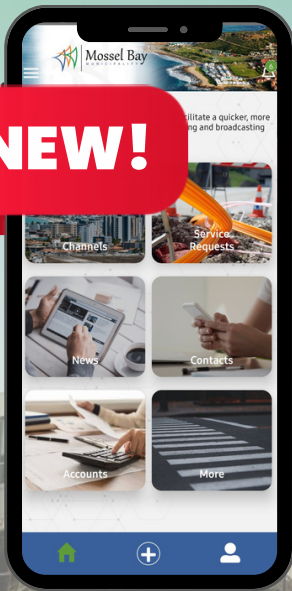
The national and provincial elections will be held on 29 May 2024. Here are the voting stations for Mossel Bay as supplied by the Independent Electoral Commission.

WARD	VENUE	ADDRESS
1	INDWE SECONDARY SCHOOL	SITHELA STREET, KWANONQABA
	SIPUCILE CRECHE	60 NDIBANISO STREET, ELANGENI
2	KWANONQABA COMMUNITY HALL	MAYIXHALE STREET KWANONQABA
	ASLA THUSONG CENTRE	ADRIAANS AVENUE KWANONQABA
3	RIETVLEI PRIMARY PRINVARVY SCHOOL	STOFILE STREET KWANONQABA
	7DE LAAN CRECHE	MZOLA STREET MOSSEL BAY
4	LAERSKOOL VORENTOE	LONG STREET, GREAT BRAK RIVER
	KLEIN BRAK COMMUNITY HALL	CNR OF KUDU & DE JAGER ST RHEEBOK
5	GREAT BRAK MUNICIPAL OFFICE	CHARLES STREET, BREAT BRAK RIVER
	RHEEBOK COMMUNITY HALL	CNR OF KUDU & DE JAGER ST RHEEBOK
6	VOORTREKKER SAAL	SCHOEMAN STREET MOSSEL BAY
	NEW LIFE CHURCH	APIESDORING STREET, HEIDERAND
7	LUTHERAN CHURCH HERBERTSDALE	SKOOL STREET, HERBERTSDALE,
	SONSKYNVALLEI COMMUNITY HALL	MANDELA SONSKYNVALLEI
	BRANDWAG COMMUNITY HALL	LEVENDAL STREET, BRANDWAG
	DENNEPRAG PRIMARY SCHOOL	RUITERBOS
	LUTHERAN CHURCH BUISPLAAS	HERBERTSDALE ROAD BUISPLAAS
8	TOWN HALL	101 MARSH STREET MOSSEL BAY
9	D'ALMEIDA COMMUNITY HALL	CORNER OF ALHOF DRIVE & MOSSEL STREET D'ALMEIDA
	LUTHERAN CHURCH EXT 6	DIAL BRANDT STREET
	SAO BRAS SECONDARY SCHOOL	SKOOL STREET, D'ALMEIDA,
10	HARTENBOS BOWLING CLUB	RIEMLAND STREET HARTENBOS

KNOW YOUR VOTING STATIONS

WARD	VENUE	ADDRESS
11	DANA BAY COMMUNITY HALL	A COMOSA STREET DANABAAI
	BOGGOMS BAY COMMUNITY HALL	WHALE STREET, BOGGOMSBAAI,
12	FAMILY WORSHIP CHURCH	ALHOF AVENUE, D'ALMEIDA
	JOE SLOVO COMMUNITY	MPOKI STREET, JOE SLOVO VILLAGE
13	ERIKA PRIMARY SCHOOL	SAMPSON STREET, EXT 13
	INDOOR SPORT CENTRE	GRUNTER STREET, EXT 13
14	FRIEMERSHEIM COMMUNITY HALL	EIKE STREET, FRIEMERSHEIM
	NG CHURCH HALL	WATSONIA AVENUE, GREAT BRAK RIVER
	MULTI PURPOSE HALL	4 PETUNIA AVENUE GREENHAVEN, GREAT BRAK RIVER
15	ASLA COMMUNITY HALL	MZOLA STREET ASLA PARK
	IMEZAMO YETHU	5420 NKOSANA MBANGI STREET ASLA PARK

NEW!



Download the Collab Citizen smartphone app



REPORT PROBLEMS

Mossel Bay Municipality appeals to residents to immediately report service delivery problems.

The following channels are available:

- 044 606 5000 - 24 h
- 44802 - SMS-line (normal tariffs apply)
- admin@mosselbay.gov.za (ideal for attaching photo's, etc.)
- Collab Citizen, municipal smartphone application

EMERGENCY COMPLAINTS
(e.g. vehicle collisions)

- 044 606 5121
- 044 606 5107
- 044 691 3722

ETHICS & FRAUD HOTLINE

Mossel Bay Municipality anti-fraud hotline

- 0800 333 466 (24h)
- mbm@behonest.co.za
- 49017 - SMS (normal tariffs apply)
- www.behonest.co.za - website/ "chat"

Please visit The Mossel Bay Municipality Website: www.mosselbay.gov.za

The municipal social media page is not continuously monitored and service delivery complaints uploaded by the public may not be immediately noted. The municipality responds as quickly as possible to any complaints.